



KoPa WiFi Lab App

User's Manual

Content

1. Hardware Requirements	- 1 -
2. Operating System Requirements	- 1 -
3. APP download and installation	- 1 -
4. Connect and Capture Images by Using the APP	- 2 -
5. APP function introduction	- 2 -
6. Real-time Preview Window Button Introductions	- 3 -
7. Folder management	- 5 -
7.1 Folder management	- 5 -
7.2 Video management	- 6 -
8. Use the APP for Calibration and Measurement	- 7 -

1. Hardware Requirements

Please confirm that the smart terminal device (mobile phones/ tablets) hardware must support the 5G WiFi IEEE802.11ac protocol, otherwise it will not be able to acquire the image correctly.

2. Operating System Requirements

iOS system:

The list of iOS devices supporting 5G WiFi IEEE802.11ac is as follows:

iPhone X/ 8/ 8 Plus/7/ 7 Plus/6s/6s Plus/ 6/6 Plus

iPad Pro (12.9 inches, 2nd generation) / (12.9 inches, 1st generation) / (10.5 inches) / (9.7 inches) iPad Air 2/iPad mini 4 and other new devices that support the 5G WiFi (11ac) protocol

Requires iOS 11.0 and later version.

Android system:

Android 5.0 and later version.

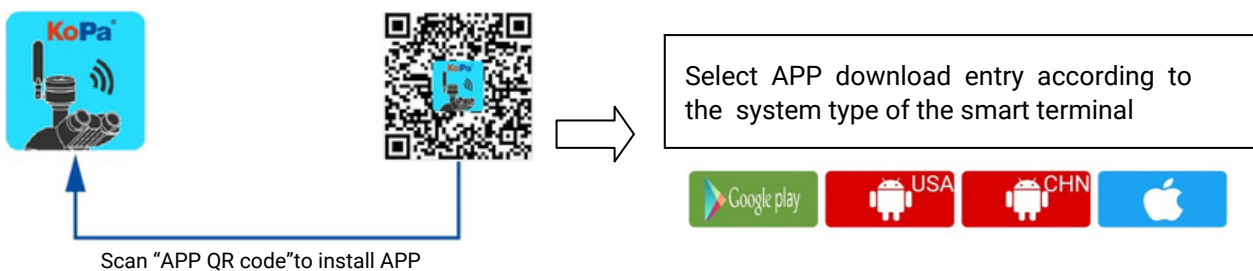
CPU: Dual core 1.7GHz and later version.

Memory RAM: 3G or more



Storage ROM: Recommended 8G or more


3. APP download and installation.


Use the smart terminal device to scan the QR code of the student camera and download and install [KoPa WiFi Lab] as prompted.



After the APP download is complete, follow the prompts to allow installation and allow all authorizations. Clicking "Not Allowed" will result in an inability to connect properly.

For Android users, if you can log in to the Google App Store, you can click one of the two buttons   to download.

For Android users in mainland China, please click the  button to download.

iOS system users please click the button  to download

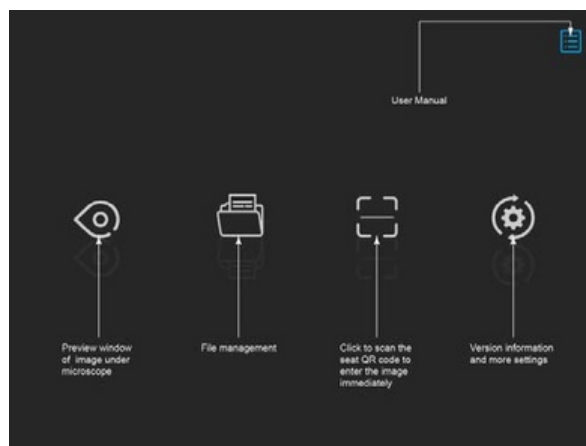
4. Connect and Capture Images by Using the APP

After the APP is installed, the camera's serial number QR code on the camera body can be scanned using the built-in QR code scanner of the APP to directly connect and acquire images.

Scan "student seat QR code" within the APP



5. APP Function Introduction



Preview: Click here to enter the image preview window.



File folder: View photo/video files.



Scanning: Scan the camera's serial number QR code to acquire the image. To ensure preview speed, it is recommended that no more than 8 smart terminals connect to the same camera at the same time.




Settings: APP settings.



User instructions (top right corner): Retrieve/hide user instructions.

6. Real-time Preview Window button Introductions



 This button toggles the preview mode to fast speed or high image quality. But the image taken is only the highest resolution by default.

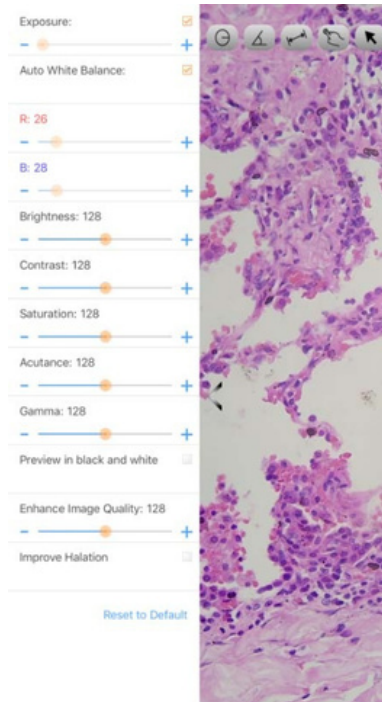
Annotation tools



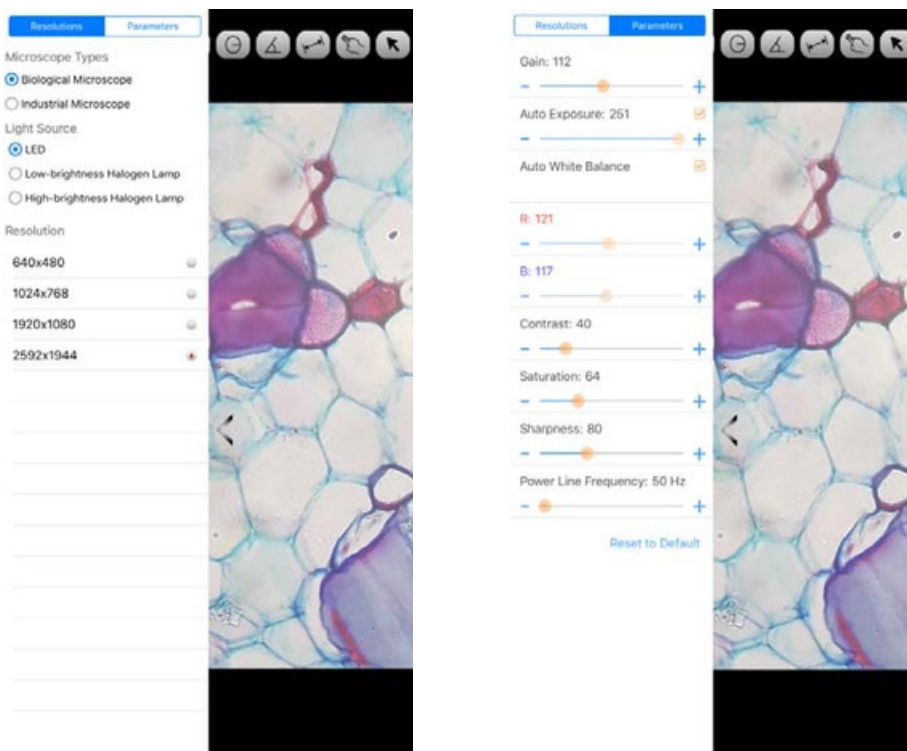
Click the left arrow button in the preview window to bring up the image properties toolbar.

Image properties toolbar adapts to one of the following two modes depending on the product model.

Mode 1: Adjustable Exposure/White Balance/Brightness/Contrast/Saturation/Sharpness/Gamma/Black and White Preview (On/Off)/Overexposure Suppression/Image Enhancement/Restore Default Settings, as shown below.



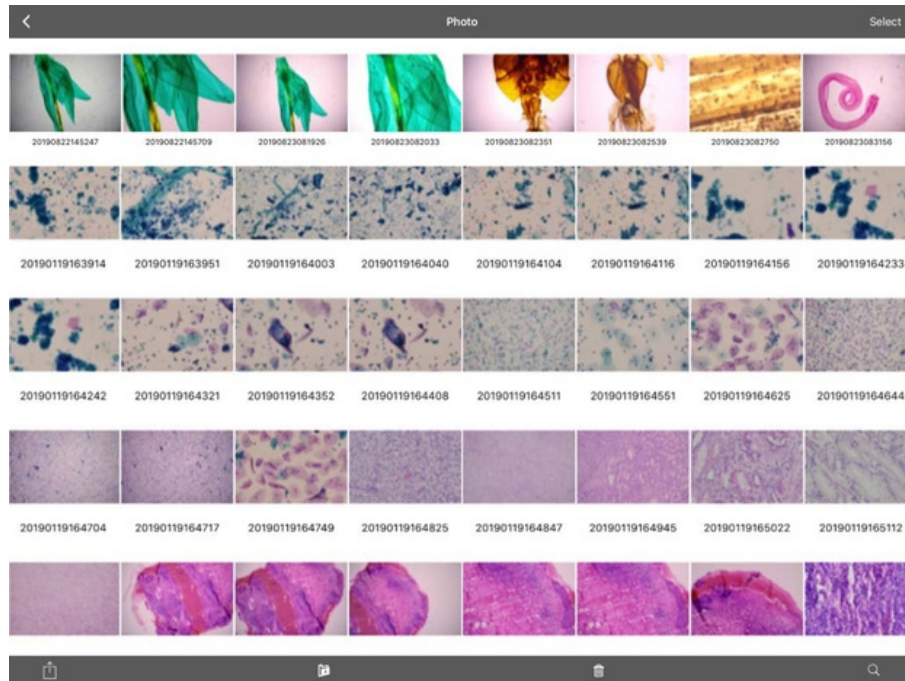
Mode 2: Adjustable Microscope Type / Light Source / Resolution / Image Enhancement (Displayed at 3840x2160 resolution only) Brightness/Exposure/White Balance/Contrast/Saturation/Sharpness/Power Line/Restore Default Settings, as shown below.



7. Folder Management



7.1 Images Management

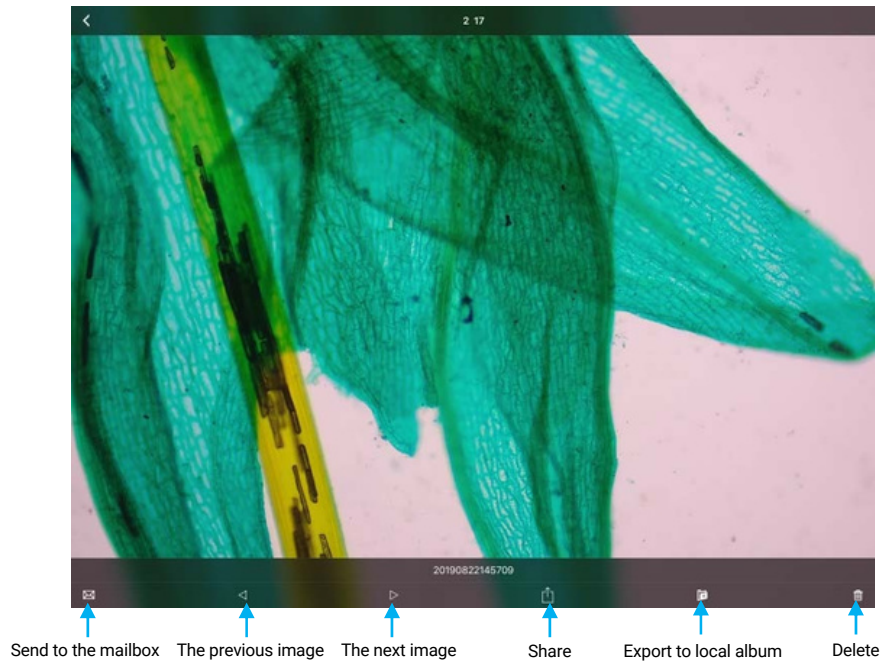


Click on "Select" in the upper right corner to make single or multiple selections and then click on the bottom four buttons:

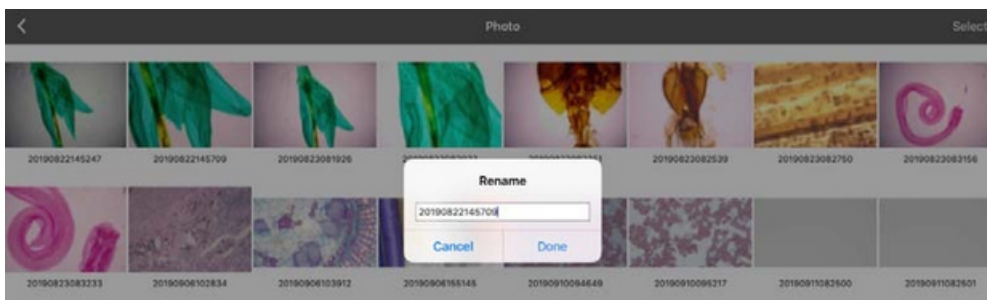
- One-click export to local album
- Note: Please select Allow APP to access your album by setting your smart terminal " Privacy - Photo", otherwise it will prompt "Export fail".
- Share to social networks
- One-click delete
- Search image file by name

Click to enter any image, the bottom button from left to right:

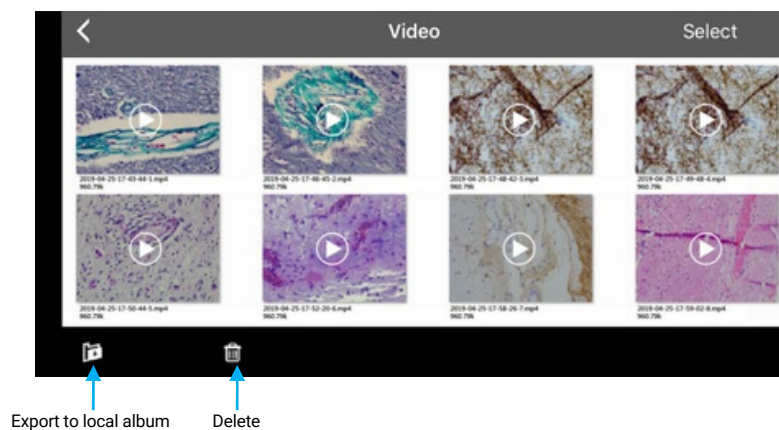
- Send to the mailbox (the device needs to be installed in advance with the mailbox);
- The previous image;
- The next image;
- Share a single image to the social network;
- Export the image to the local Album;
- Delete the picture



Click on the file name to rename.



7.2 Video Management



Click "Select" in the top right corner and then click the button at the bottom.

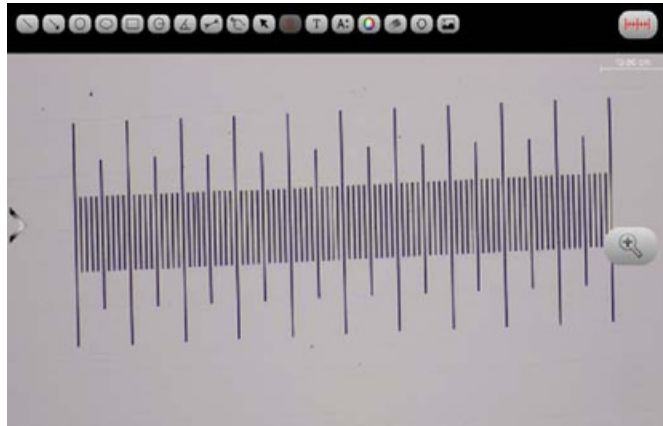
- One-click export to local camera

Note: Please select Allow APP to access your album by setting your smart terminal " Privacy-Photo", otherwise it will prompt "Export fail".

- One-click delete

8. Use the APP for Calibration and Measurement

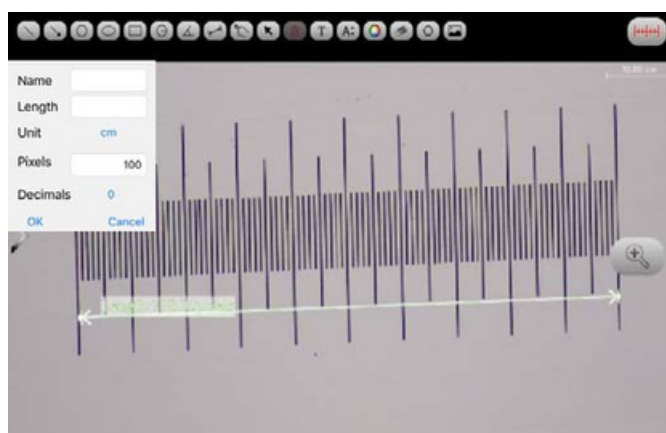
Place the calibration scale within the microscope's field of view.



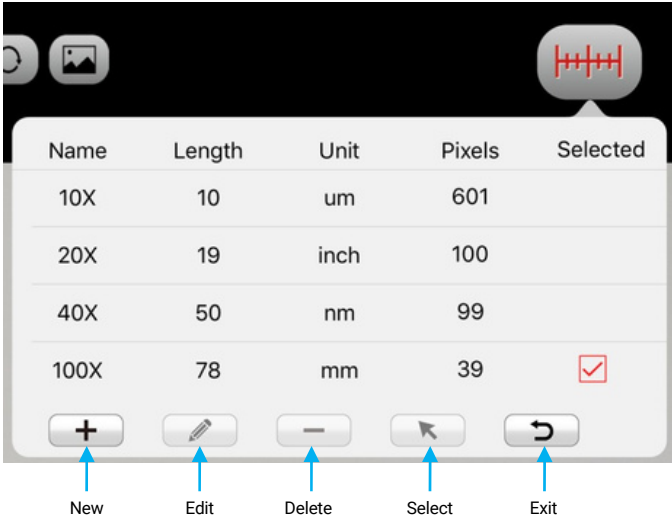
Click  - and "add"

Name	<input type="text"/>
Length	<input type="text"/>
Unit	cm
Pixels	100
Decimals	0
	OK Cancel

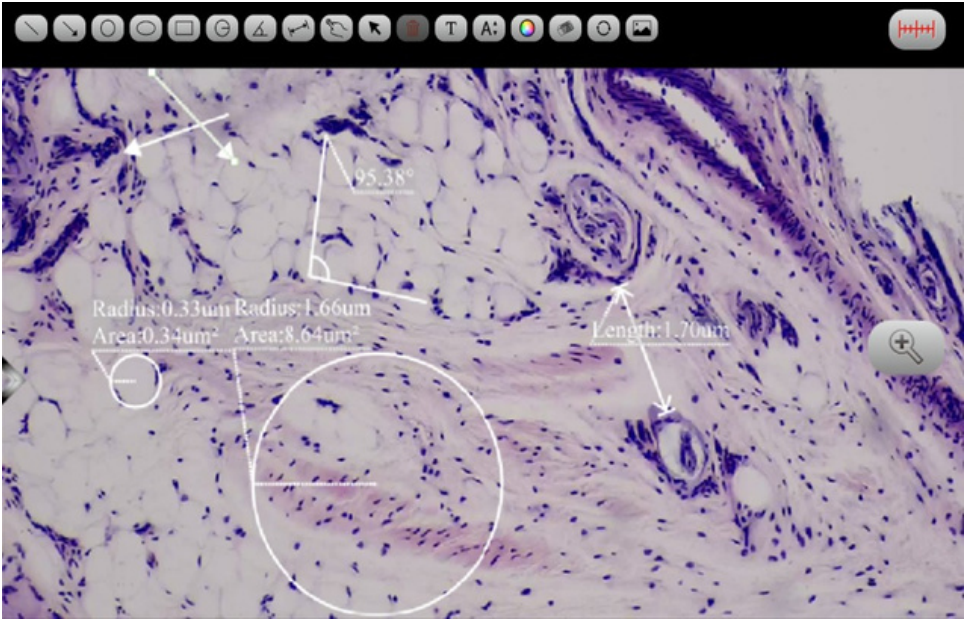
Enter the name, the actual length of the calibration scale, and select the unit. When you draw on the ruler, the pixels are automatically entered as shown below. Click "OK" to complete the calibration.



Select calibration value



Then use the measurement tool at the top of the preview window to measure



Specifications are subject to change without any obligation on the part of the manufacturer.



LANOPTIK TECHNOLOGIES LTD

No. 72 Hongjing Street, Lejia Road, Baiyun District, Guangzhou, China. 510400

Phone: +86 20 3898 6017 | Fax: +86 20 3847 6076

Website: <http://www.lanoptik.com> | Email: info@lanoptik.com