



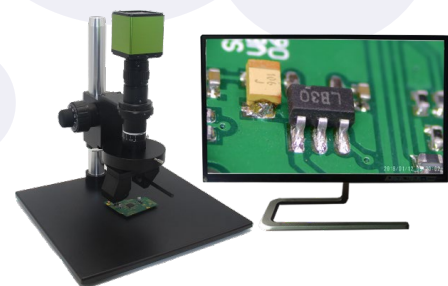
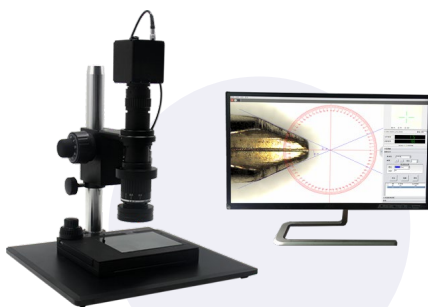
Industrial Inspection HDMI & 4K Camera

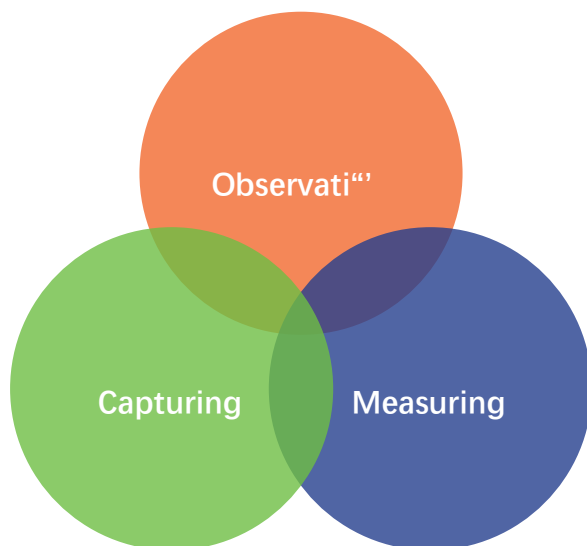
Full HD and 4K UHD cameras specially designed for industrial inspection, 1080P at 60 fps and 4K at 30 fps.



Features & Benefits

- 1080P full HD (or 4K) live image output
- 60 fps live image without smear
- Connects directly to an HD monitor (or 4K display) with HDMI input
- Multiple crosshair for quick gaging
- Embedded measuring software (for measuring camera)
- Multiple measurement tools such as lines, circles and radius available in manual tab (for measuring camera)
- Live/ freeze image function
- Built-in cross line graphics: up to 8 overlay lines adjustable and 6 color options
- Aluminum CNC processing housing





Applications

- IC package inspection
- Color recognition judgment
- Solder joint inspection
- PCB placement leakage detection
- Screw inspection
- LED defeat inspection
- Artifact inspection
- Jewelry Inspection
- Flexible PCB inspection
- Tool wear detection
- Other optical pattern inspection



Specifications

Camera model	HDMI-200EN	HDMI-200	HDMI-201EN	HDMI-201	HDMI-201M	HDMI-800EN	HDMI-800	HDMI-800M
Camera type	Observation	Capture/Storage	Observation	Capture/Storage	Measurement	Observation	Capture/Storage	Measurement
Resolution	1920x1080		1920x1080		3840x2160 (4K)			
Sensor size	1/3"		1/2"		1/1.7"			
Pixel size	2.75μm x 2.75μm		3.75μm x 3.75μm		1/85μm x 1.85μm			
Frame rate	60 fps		60 fps		30 fps			
Color depth	12:12:12 RGB		12:12:12 RGB		12:12:12 RGB			
Exposure	Automatic, manual							
White balance	Automatic, manual RGB adjustable							
Operation	Navigation button	USB Mouse	Navigation button	USB Mouse		Navigation button	USB Mouse	
Fiducial line	8 movable lines with color setting							
Power input	DC 12V, 2A							
Output interface	HDMI			HDMI, only recognize 4K display				
Capture & storage	N/A	U-disk storage	N/A	U-disk storage	U-disk storage	N/A	U-disk storage	U-disk storage
Built-in Measurement*	N/A	N/A	N/A	N/A	Available	N/A	N/A	Available
Dimension (mm)	65x51x51	67x61x61	65x51x51	67x61x61	67x61x61	65x51x51	93x66x47	93x66x47